

The Eternal Way

December 2003 – January 2004

The Evidence of Spiritual Maturity

But the fruits of the Spirit are love, joy, peace, patience, gentleness, goodness, faith....Let us therefore live in the Spirit, and surrender to the Spirit.

Galatians 5: 22 and 25

(Lamsa's Translation of the Aramaic Peshitta Text)

There is a story of a man named Sir Render who prayed with sincere devotion asking God to guide him to greater service in the community. Within days, he encountered while walking on a wooded path in a park a longtime friend who was a local school teacher he had not seen for several years. During their "reunion" conversation, the school teacher indicated that their school needed a basketball coach to fill in for one who left the school unexpectedly due to illness. In that moment, Sir Render realized that this was the answer to his prayers. After all, he thought, he knew and loved the game well since he had been a high school and collegiate basketball player. Plus, he loved being around kids.

So Sir Render applied for the position and within days his confirmation from the school board committee arrived. He couldn't be more excited! He felt that this was truly a divine appointment for him to use his talents and inspire young kids in this sports program.

Sir Render's first day of practice with the team took place and he realized that many of the kids needed a lot of work if this season was to be meaningful. Some of them had good physical skills, but sloppy mental thinking. Others had good attitudes but were not star talent in a physical sense. Sir Render knew he had to integrate the talents of all the players if they were to play together cohesively and bring out their best as a team.

Sir Render asked for guidance, was inspired, and came up with a buddy system plan. One player with great physical skills was matched with another player with a better attitude but less capable physical playing ability. They were asked to eat together at school, work together on homework where possible, and do basketball drills

together during practice. Within just a few weeks there were positive and dramatic results and the team was appearing really ready for their first game. Even parents came forward to testify that their children were undergoing remarkable transformation at home and at school. Reports of improved homework, attention in class, and more cooperative behavior with house chores were among the topics commented about.

Opening game night came. The crowds were there. The cheerleaders were there. The vendors were selling drinks, popcorn, and candy. All the hustle and bustle associated with a high school game were in full swing. But the team was in the locker room quiet, reflective, dressed, and ready for Coach Sir Render's final inspirational words before going out on the court for their first showing.

Sir Render came into the locker room and asked them to gather in a circle around him. He complimented them on their hard work, their concentration, discipline, and most importantly their new spirit as a team. He showed them how they had come to the season acting separately, as individuals, but how now they were working together, a team of one. And he reminded them that no matter what happened during tonight's game, that by giving their best and that by working together, all outcomes were perfect, regardless of the final score. The love and enjoyment of the journey were important, their positive attitudes were important, and how they gave of themselves in service to each other and to the process of the game were important. With that said, Sir Render asked them to all bow their heads. They prayed a surrendered prayer of gratitude, roared a school yell in unison, and then went out on the court and played the game of their lives!

That they won or lost is not important to the rest of this story. Every day this scenario plays out in every association, relationship, home, and family. Every day we decide how we are going to play the game of life, how we

are going to work together, and how we are going to react to the circumstances around us. This is what this holiday season and what *every day, every moment*, is really calling out for. How we handle the challenges and complexities of life is the stuff of our spiritual, emotional, mental, and physical unfoldment.

What is the evidence of authentic spiritual maturity? They are unshakeable joy, unconditional love, and selfless service.

Unshakeable joy is that fountain of bliss and innocent wonder that emanates *from us* in all life situations regardless of the level of ease, difficulty or outcomes. It is unshakeable because it does not depend on outer circumstances to be experienced. It is within.

Unconditional love is accepting and forgiving yourself and others if you or they fall short of expectations. You love without condition and without the exclusion of anyone.

Selfless service is finding your niche in uplifting others. Whatever you have done up to this point in your life is all part of your grooming to perfect yourself to be a light in this world. It is the natural inclination of one who is spiritually awake to work selflessly in some way to empower others to be awake in Spirit too! Why? So that all may experience joy, love, and then serve life itself!

None of these fruits of the Spirit can be faked. They are the result of surrendering to Spirit, the One Spirit of us all, and then living every day as the holy moment it truly is. Meditate deeply and then realize the “holidays”! Realize holi-moments! Peace.

Copyright © 2003 Eternal Way.

Eternal Way Journal is published six times a year by *Eternal Way* and is supported by member and readership donation. 1122 South Lamar, Austin, Texas 78704, U.S.A.

512.445.1080

Front page article by Rocco benRoy unless otherwise noted. Rocco benRoy is the minister-director of the Eternal Way. His training and ordination are in the spiritually enlivening and holistic tradition of the ancients as taught by his Kriya Yoga mentor, Roy Eugene Davis.

The Eternal Way Center provides personal counseling and group seminars for spiritual realization, emotional and mental clarity, and physical vitality. The center is dedicated to assisting and empowering each responsive soul, a living temple of God, to cultivate their innate potential and to express their unique purpose and destiny as divinely intended.

All services and functions are funded by donation support. Come join in. We welcome you, for we serve God in you.

Website: www.eternalway.org

Email: office@eternalway.org



The Giving Tree

by Rudy Davenport

I always look forward to the Christmas Season. It is a time when the feelings of “Goodwill Toward All,” and “Peace On Earth” are in the air. No matter what the past year has brought us, and no matter what our situation, Christmas is a time for the birth of renewed faith, hope, and love. We naturally feel more generous and compassionate during the Christmas Season, and we remember those who are in need, especially families with children. This year will be the third year that the Eternal Way Center is sponsoring THE GIVING TREE. It is our special “Christmas tree,” decorated with your donations for a needy family here in the Austin area. **For every donation, no matter what amount, we place an ornament on the tree.** Before Christmas, we give all these donations to a needy family, with the hope and prayer of making their Christmas a little more joyful, a little more peaceful, a little more beautiful. We invite all the members of the Eternal Way Center to participate in THE GIVING TREE this year. For every donation of \$25.00 or more you can receive my CD, *Christmas Wonder*. Listen to the words of a mother who received THE GIVING TREE donations in a previous year:

“Thank you. You cannot imagine how deeply what you did for us has touched our lives and our hearts. A most heart felt appreciation for your care, concern and your most generous gifts. You truly helped us through a most difficult time. May God bless you 10-fold.”

Won’t you be a part of this “10-fold” blessing of God? Help us cover THE GIVING TREE with ornaments of faith, hope, and love.

Rudy Davenport has a B.A. in Music and a Master of Divinity Degree. With an extensive background in the devotional traditions of East and West, he provides Pastoral Counseling and teaches the use of Music for Therapy and Meditation at the Eternal Way.

An Invitation To Be An Eternal Way Spiritual Partner

The Eternal Way's mission is to reach as many people as possible with a spiritually-based message that God is expressing in our lives. Would you join us? Here is an overview of Eternal Way's vision and programs.

1) House of Health – one-on-one and group lifestyle counseling and coaching on integrated healthy living in spirit, mind, and body all on a donation basis.

Rocco benRoy speaks weekly at Austin Recovery to approximately 25 women to empower them to greater wholeness. We do this free of charge to Austin Recovery. Your donation support is needed to provide literature, handouts, and audio tape programs on nutrition, goal setting, and meditation.

2) E.A.T. Outreach – whole food distribution program to feed and nourish people in need.

Approximately 21 agencies receive bread and other foods when available on a weekly basis by our volunteer staff. The retail value of the food distributed totals about \$15,000 per month or about \$180,000 per year! Volunteers are always needed and our program needs a dedicated vehicle for timely pickup and delivery such as a Toyota Matrix “station-wagon”. If you would like to volunteer or can help with providing us with this type of vehicle, please contact us.

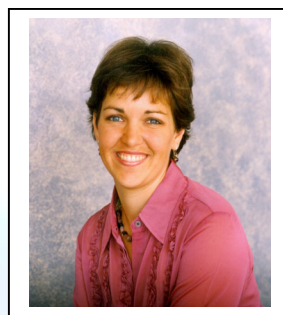
3) Eternal Way Press – inspirational publications and multimedia tools.

Publishing projects take capital and several projects such as reprinting *How to Make Your Kitchen Your Pharmacy* audio program and its companion booklet are needed now. Other inspirational book projects such as a collection of newsletter issues in one book form have been suggested for us to print. Your capital help is needed. Also an Eternal Way music CD by Rudy Davenport is envisioned meshing music, songs, and chants from different world wisdom traditions.

4) Giving Tree Endowment Program – seed investment money for an endowment program that creates ongoing giving and funds basic ministry services.

Start a stock/investment portfolio with at least \$10,000 that can begin to grow dividends.

Consider all these programs and become an Eternal Way Spiritual Partner by devoting \$25, \$50, \$75, or \$100 or more to the ministry work each month. **Please use the enclosed donation envelope and be as generous as possible** to help us help those in need through all our departments. All ministry services function on a donation basis and we freely serve everyone without regard to their ability to donate. Wonderful things can be fulfilled in this world when we collectively commit to supporting uplifting work!



Reflections on the Mission Statement

by Shara Amelia

The next in the series of enjoinders in the Eternal Way Mission Statement is to share and to demonstrate spiritual guidelines and practices for dynamic, constructive, and effective living in every area of human life. One of the most powerful principles of demonstrating spiritual guidelines (for effective sharing of spiritual guidelines is really the bailiwick, the province of those authentic persons who first effectively demonstrate them) is to align oneself openly, brightly, optimistically, constantly, to operant attractive forces.

An example? Well, we have been experiencing a drought in the area and I have often wondered how to attract rainwater to the gutters and collection system of the Retreat. Two angles have presented themselves, as they might in any dilemma you are facing. We needn't pray *for* rain anymore than we need to pray *for* God to come into our lives. If God is really all there is, then we need only utter, see, hear, and pray God for God to manifest as rain. So, *pray rain*, yes. But be rain like, right as rain, the right sort of rain as well. This is the active, serviceful, or yang side of the wholeness that is sought. Then, for the yin or receptive side, there is an Arab saying that goes: The nature of rain is the same, and yet it grows flowers in the garden and thorns in the marsh. Set yourself up as the flower—with sweet thoughts-- “soft-petal” life a little bit. Though the rain will impersonally fall upon the thorn, it is the flower that best receives its nourishment to give enjoyment and beauty back to the world. If working from these two angles at once, something typifying those positive, attractive forces will arrive to bless you yet again.

Shara Amelia has a B.A. in English Literature, an M.A. in Linguistics, an M.S. in Oriental Medicine, and is a staff member at the Eternal Way.

Look for the Eternal Way's “Your Body, Your Temple” T.V. Program on Austin Community Access, Channel 11, every Thursday at 9:30pm.

Good News!

Roy Eugene Davis's visit to Austin was a success and Mr. Davis took a tour of the Eternal Way center. His seminar at the First Church of Religious Science was attended by about 85 people. Attendees enjoyed Roy's stories about his time with Yogananda and his ministry experiences. Meditation was enjoyed and many commented on the spiritual refreshment of the whole experience. We are looking forward to having Mr. Davis again.

We want to thank every one for their support at the Eternal Way's benefit concert on November 22nd. **Rudy Davenport's** presentation of his original music was wonderful and enjoyed by the 35 or so who attended. **Richard and Marcia Imprescia** won the bed and breakfast weekend door prize. Congratulations!

This is the time of the year that the Eternal Way initiates its Giving Tree Program to assist a specific needy family. Please give generously and let's help make this program particularly abundant. When you donate any financial gift we place an ornament on our Tree in the Eternal Way lobby. Let's fill the tree with ornaments and beautify it to demonstrate that God's prosperity is alive and well. Use the enclosed envelope to send your donation or come by the ministry office at 1122 South Lamar.

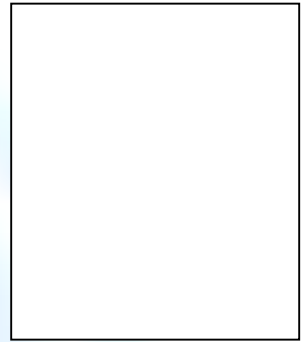
E.A.T. Outreach News

Would you like to volunteer? Come help touch others by volunteering with the E.A.T. Outreach. If you could donate one hour, one day a week to this volunteer work, the people whom we serve would deeply appreciate it. **Call us at 445-1080.** The E.A.T. Outreach has

delivered surplus whole-grain bread to **21 agencies a week on average** during the past two months and represents approximately \$15,000 per month in value. Thanks go out to our dedicated core of volunteers: **John Stern, Radha, Morris Greggs, Chrysteen Shafer, Gavin Emberson and his Bahai Faith Center Crew, Julian Bruno, and Paul Thrailkill.**

Eternal Way Retreat

Much progress has been made at the retreat. In the last two weeks, sheetrock and attic insulation was purchased from the benefit proceeds and two incredible work weekends have taken place. It is just in time – the cold weather has started to roll in! Come see the progress in the previously unfinished wing of the Eternal Way retreat. We are having the **December Community Spiritual Gathering at the retreat on Saturday, December 20th starting at 1 p.m. and going until after dark. A potluck, Christmas carol singing, walking the Prayer Path of Faith, and finishing with a holiday bonfire with hot cider are all scheduled. Call 512-445-1080 for directions if you want to come and haven't yet been there.** Most pressing item still needed for the retreat: **One 47½" w x 84" h French door priced at \$671. Donations specifically for the purchase of this item are sincerely appreciated.**



Dec. 03 and Jan. 04 - Wednesday Programs

	December / January		
Using Mind, Body, and Heart to experience God	3	7	7pm
Studies in Truth	10	14	7pm
Using Mind, Body, and Heart to experience God	17	21	7pm
Community Spiritual Gathering w/Potluck		28	7pm
Community Spiritual Gathering w/Potluck – Saturday at Bastrop Retreat	20		1 - 7pm

Rocco benRoy's Speaking Engagements

11/25/03 Soul's Outreach – Austin, TX

Each month at the Eternal Way's **Community Spiritual Gathering**.
Every Tuesday at **Austin Recovery Center** for individuals in drug
and alcohol recovery. **9AM**

Contact us if you would like directions or additional information.